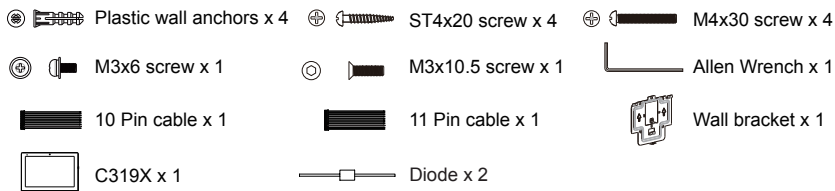
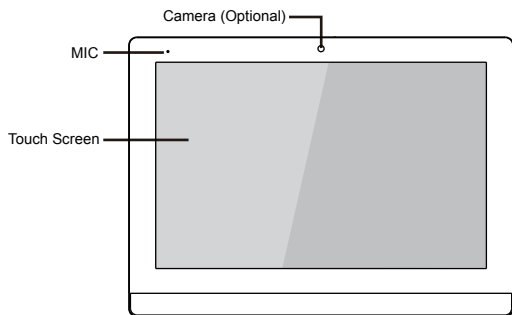


## Unpacking

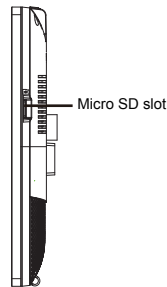
Please make sure the package contains the following items:



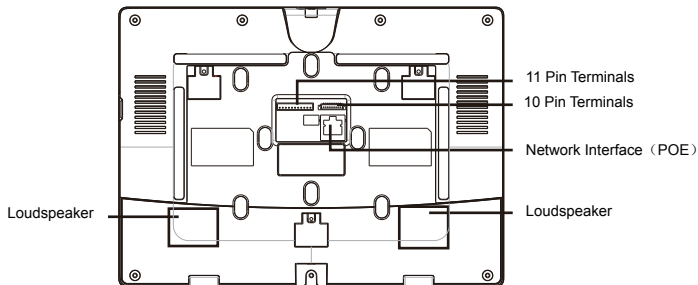
## Product Overview



Front Panel



Right Side

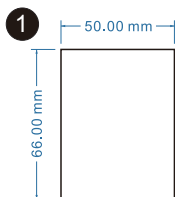


Rear Panel

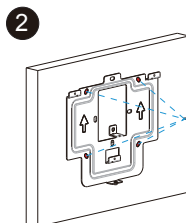
## Installation

### Step 1: Wall Bracket Installation

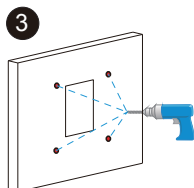
#### Without embedded box in the wall



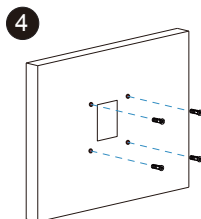
According to the position of the cable in the wall, dig out a square hole (height\*width\*depth =66\*50\*50 mm) that can accommodate all cables.



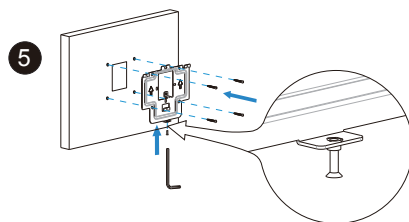
Align the square holes of the wall bracket with the holes previously dug, and then mark the four fixing holes of the wall bracket on the wall.



Take down the bracket and drill the four marked fixing holes on the wall (5 mm drill bit required).

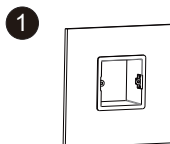


Once the fixing holes were made, insert plastic wall anchors provided.

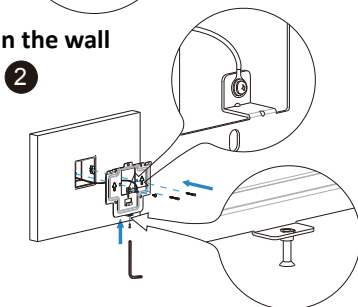


Twist M3x10.5 screw into the bottom hole of the bracket until the tail of which align to the edge. Then fix the wall bracket on the wall with four ST4x20 screws. If there is a ground wire to be connected, use M3x6 screw to fix it on the wall bracket.

#### With embedded box in the wall



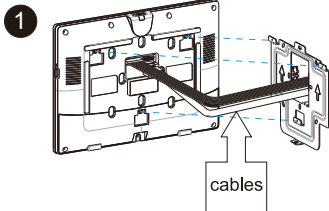
Make sure all cables in the embedded box .



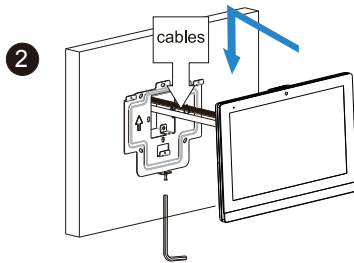
Twist M3x10.5 screw into the bottom hole of the wall bracket until the tail of which align to the edge. Then fix the wall bracket on the wall with two/four M4x30 screws. If there is a ground wire to be connected , use M3x6 screw to fix it on the wall bracket.

# C319X Quick Guide

## Step 2: Device Mounting



Connect the cables to device.



Push down to fix the device securely. Use the Allen wrench to tighten the device with one M3x10.5 screw.

## Configuration



1. Access basic information: After setting up network and power, enter **Setting -> System Info** to check Account, Network, Version status.
2. Access the Website: Launch a browser and type in the IP address then enter the username and password to login. (username/password: admin /admin by default)
3. Account Registration: On web UI, go to the path: **Account -> Basic** page to fill in the account information, click Submit to confirm. (Please refer to user manual for more information)

## Operation

### Make a call:

Enter the callee's number, then press Dial  icon to make an audio call or press video camera  icon to make a video call. Press  icon to hang up.


### Receive a call:

Press  icon to pick up the incoming call in video mode or press  to pick up the call in audio mode.

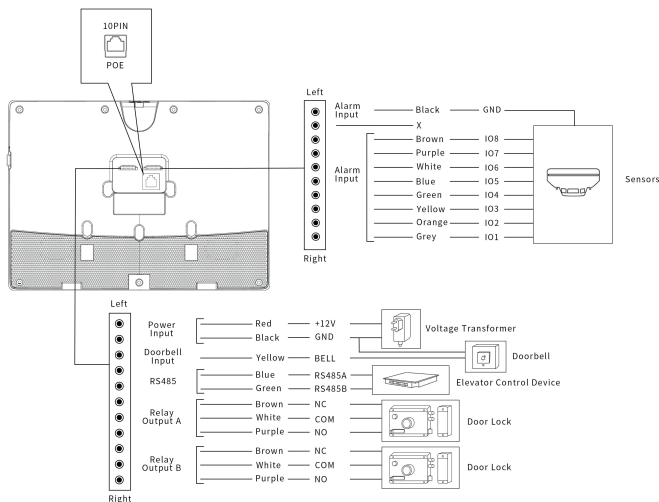
### Unlock:

During the talk, you can press the Unlock  icon on the talking screen to unlock the door.

### Monitor:

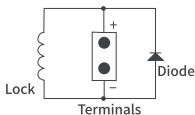
Press the Monitor  icon to receive the video from the door phone or from third-party devices.

## Device Wiring



### Warning

When you connect a device containing a coil, such as a relay or an electromagnetic lock, it is necessary to protect the intercom against voltage peak while switching off the induction load. For this way of protection we recommend a diode 1 A / 200 V (included in the accessories) connected antiparallel to the device.



### Notice Information

Information contained in this document is believed to be accurate and reliable at the time of printing. This document is subject to change without notice, any update to this document can be viewed on Akuvox's website: <http://www.akuvox.com> ©Copyright 2019 Akuvox Ltd. All rights reserved.

**AKUVOX (XIAMEN) NETWORKS CO., LTD.**

ADD: 10/F, NO.56 GUANRI ROAD, SOFTWARE PARK II, XIAMEN 361009, CHINA  
[www.akuvox.com](http://www.akuvox.com)



YS3190000